



SAGE INTERNATIONAL SCHOOL BOISE NEWSLETTER

JANUARY 30, 2026



Re-enrollment for current Sage students is January 30th - February 9th! You should have received an email from Skyward today with the link and instructions. If not, please check your spam folder and reach out to boise.info@sageintl.org if you didn't receive it. If **your student has a sibling** you would like to enroll, please do so when you re-enroll your Sage student!



Secondary Yearbooks (for grades 6-12 ONLY at this time) are available for purchase through [TreeRing!](#) School Passcode is: 1017105249641604. PYP (K-5) yearbook order information is coming soon!



Class and Spring Pictures will be Tuesday, February 24. Mark your calendars, ordering information will come soon!



Our annual **Family Engagement Survey Opens February 11.** We value your voice! Sage parents and guardians are invited to participate in our annual Sage Family Survey to share your experience at Sage. Your responses help guide real decisions and strengthen our school community. Please expect an email from us before February break with information for completing the survey.



Bonne Année from the French team! We invite you to enjoy January's **French Newsletter**.

Check out our **WEBSITE** and find us on social media via the links below!



MARK YOUR CALENDAR

January 30: Re-enrollment for 26-27 School Year

February 16-20: Winter Break - No School

February 26: PTO PYP Luau

April 6-10: Spring Break - No school

The [2026-27 Academic Calendar](#) is posted!

FROM EXECUTIVE DIRECTOR, EMILY DOWNEY



As we begin a new semester, January offers a natural moment to pause, reflect, and reset. It is a time when routines take shape again, intentions feel fresh, and we have a meaningful opportunity to recommit to the habits that best support our children's learning and well-being.

One of the most impactful of those habits is *regular school attendance*.

Within the International Baccalaureate (IB) framework, learning is intentional, connected, and built over time. Each school day plays an important role in helping students develop not only academic knowledge, but also the skills and dispositions of the IB Learner Profile, such as being knowledgeable, reflective, communicative, and principled.

Consistent attendance is closely linked to *positive academic outcomes*. When students are present each day, they are better able to engage with lessons as they unfold, apply feedback, and make steady progress. This is especially critical in the early and elementary years, when students are building foundational reading skills. Reading instruction is cumulative by nature. Each lesson builds on the last and regular attendance helps ensure students develop the decoding, fluency, and comprehension skills that support learning across all subject areas.

When students attend school consistently, they experience *greater continuity in their learning*, stronger confidence in classroom routines, and deeper connections with both peers and teachers. Daily presence allows students to fully participate in inquiry, collaborate meaningfully with others, and develop the independence, responsibility, and self-management skills that are central to the IB approach, experiences that are difficult to replicate when learning is interrupted.

Attendance also plays an important role in *positive student well-being and mental health*. Being part of a consistent routine, engaging daily with trusted adults, and feeling connected to a learning community all contribute to a child's sense of belonging, purpose, and emotional security. Regular attendance helps children feel grounded and supported, while frequent absences can sometimes make it harder for students to feel confident, connected, or caught up, adding unnecessary stress or anxiety over time.

We also want to acknowledge and celebrate the value of family time. Our school calendar is intentionally designed with several long breaks throughout the year. These breaks are built in to provide families with meaningful opportunities to travel, recharge, and disconnect from the routines of daily life. In light of this, we ask families to intentionally use these scheduled breaks for extended trips and time away, rather than pulling students out during planned school days. We have a limited number of instructional days each year, and each one is thoughtfully designed to support learning, connection, and growth. To fully deliver on the promise of the Sage experience, we truly need to use every school day to its fullest capacity.

Continued...

When families and school work in true partnership, students thrive. We ask families to make regular attendance a priority so students can fully experience the richness of the Sage program and develop habits that support them now and in the future.

I want to close with a personal note of gratitude. Leading this school allows me to see, every day, the trust you place in us and the care you show for your children. This trust is shared and honored by every adult on our campus. As we look ahead to the remainder of the semester, I am deeply grateful for our partnership and excited about the growth, connection, and joy that are possible when our students are here each day, learning and growing together. Thank you for allowing us to walk alongside your family and to support your child during such an important chapter of their life.

With warmth and gratitude,

Emily Downey

SUPPORT SAGE

There are many ways you can support Sage and benefit our students and teachers, and we appreciate it ALL. Sage is truly a family and as the saying goes, raising kids truly takes a village. We are SO GRATEFUL for our village!

First, we thank all our families for their support toward [Mind the Gap](#) so far this year. With your online donations, mailed checks, and matching employer gifts, **we have raised \$48,740!** We are well on our way to reaching our **goal of \$125,000 this year, which is about \$125 per student.** We really need your help, we are through about 60% of our school year, but only at 39% of our goal. Every donation of any size shows that you support the hard work our students and teachers do at Sage every day!

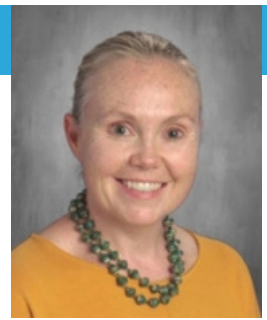
\$48,740

**\$125,000
GOAL**



Second is our Amazon Wishlist. Throughout the year we run low on community supplies that are used by all students. Being in the depth of winter, we are in particular need of tissues, disinfecting wipes, and hand sanitizer. If you would like to contribute, you can drop items off at any front desk or order from our [Amazon Wishlist](#) to be delivered directly to the school. THANK YOU!

Third, do you shop at Fred Meyer? You can support Sage every time you shop there! Simply enroll in Fred Meyer's Community Rewards Program and use your loyalty card, and funds are automatically sent to Sage. Simply log into your [Fred Meyer Rewards account](#), click your name in the top right corner on your PC, and click "My account." Select "Community Rewards" and search for "Sage international School" to enroll! They send us a check for a small percentage of what you spend!



Academic Update

Important things are happening in our classrooms this year, and the data confirms it. From the 30,000 foot view (schoolwide), we are seeing

seeing HUGE strides, with many students and overall grade levels identified as achieving both high growth and high levels of overall proficiency. This is a challenging bar to reach, and it is a very positive indicator of a healthy school. We feel incredibly fortunate to be doing this work with you and with your children.

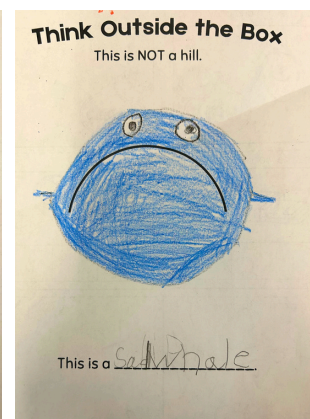
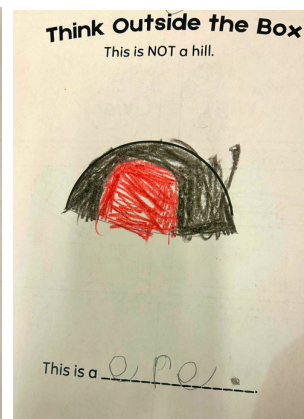
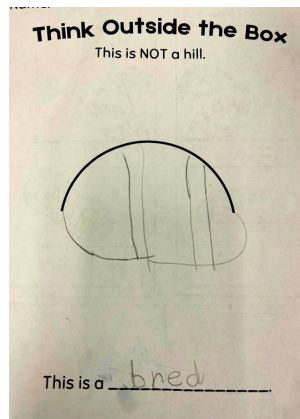
While mid-year achievement data gives us valuable information and helps us identify those overall trends and needs, we also know that, at an individual level, one data point does not tell a child's whole story of their year (or even their week!). At the individual level, we use formal assessment data as one part of the story of a child's year. Most importantly, we use this information to reflect on our own practices as educators, always seeking to know what we can and should adjust to meet students where they are.

We will share hard copies of each students' assessment results with you shortly. As always, if we are concerned with any students' progress, we will partner with you individually and directly.

Learner Profile Attributes in Action

As you may know, in January we focus on the attribute of being open-minded. One of the lenses through which we experience being open-minded is personal, and we use the language of "I understand that other people experience the world differently than I do, and that's okay!"

Pictured here is one way that our Kindergarten students engage with this idea. Here you will see that with one visual prompt (a simple semi-circle), students created everything from a loaf of bread to a cat ear to a sad whale. We LOVE to see students share their perspectives and hold both their ideas and the ideas of others as valid at the same time.



Along those same lines, we are so fortunate to work in a community like this one, where we can hold both the objective achievement data I described above AND the incredible creativity of our students in our minds at the same time.

As always, thank you for sharing your children with us!



Middle School culture in action

Middle school artists recently step into the shoes of master artists by recreating a famous painting, and the results were impressive! As you explore the submissions, you'll recognize several iconic works—each reimagined with creativity. Nearly two dozen paintings were submitted, and a selection is featured below.



One of the great strengths of a K-12 school is the way students have opportunities to collaborate and connect across all ages. Science teacher and 6th-grade advisory leader Mr. Tetrault continued an annual collaboration with Mrs. Foshay's 3rd-grade class to create friendship bracelets, play games, and share snacks. Check out the fun below!

Academic Updates

Our latest academic snapshot confirms what we see happening in classrooms every day: real growth is happening. Last week we wrapped up our winter MAP testing we are so proud of our students and teachers for their progress!



Parenting Resources:

In the continued spirit of sharing resources for the ever-challenging role of parenting, I offer you again an article from the [You.Me.We.All](#) alliance. [THIS one](#) focuses on how to support your student with the challenges of being introduced to vaping. Additionally, here is a FREE VIRTUAL CDH educational event to help prevent youth vaping, Monday, 2/23, 6:30-7:30 p.m. Here is the [Registration link](#).

Additionally, there is an upcoming event at the Bown Crossing Library on Feb 2, from 12-1 pm that discusses supporting tweens and teens' sleep patterns. You can see the Flyer [HERE](#).

As always, thank you for your support. It takes a team, a village, and just a whole lot of dedicated caring community members to raise our kiddos into kind and caring, intelligent, critical and creative thinkers. Our work is certainly a partnership with our families.

HIGH SCHOOL (9-12) WITH BRANDY BURKETT

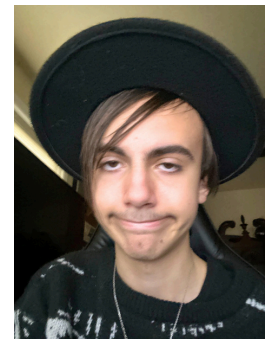


Our IB Attribute of the month is **Open-Minded!** As Open-Minded people we critically appreciate our own cultures and personal histories, as well as the values and traditions of others. We seek and evaluate a range of points of view, and we are willing to grow from the experience.

Our student-nominated IB Teacher of the Month is **Melissa Webster!** Ms. Webster has been teaching DP History and Economics for over a decade at Sage. She is an incredible educator and colleague, and we are so blessed to have her as a part of our Sage family. Senior Jeya Sihka shared, *"She always listens and tries to understand our perspective and ideas while also sharing hers kindly. I witness so much flexibility and nuance that adds value to the lessons and curriculum taught in her class."* Senior Cody Jones stated, *"She loves to celebrate every culture. As a historian, she's very knowledgeable and appreciative of other cultures and the people who celebrate them."* Angelique Musila added, *"Ms. Webster is always educating herself and others on world news and the perspectives of others"*. Melissa, THANK YOU for everything you do to create an incredible experience for our students!



Our IB Students of the month are freshman Scyrus Cusimano, and Junior Cooper Thomsen! Mr. Falconer had the following words about Scyrus: *"Scyrus has one of those rare but amazing personalities that not only shows his own values and convictions, but is open and curious about other people's perspectives and experiences. He always comes to class with a willingness to learn and an openness to going outside his comfort zone. It is also part of what makes him so unique and funny!"* Scyrus, thank you for being IB and for sharing this amazing quality with your classmates and teachers!



Cooper Thomsen is a junior in our DP Program. Ashley Henderson and Dr. Faith Hansen shared the following about him: *"Cooper is open to learning new ideas, asks questions, and is always ready to shift his perspectives based on new information. Cooper is constantly reflecting on his pre-existing ways of thinking and looking to understand the world in new ways."* Cooper, keep up the good work!

Capitol Field trip for 10th-grade Government students:

Our entire 10th-grade class had the opportunity to go on a field trip to the Idaho State Capitol. They had a guided tour, and students happened to be there the day of the Governor's State of the State address. One group was able to go into the Governor's office, a committee meeting room and both groups were able to take a tour of the Senate and House seating area. This is an amazing field trip that Mr. Lunt hosts for his students each year.



High school continued...

Winter Formal: Our High School Winter Formal was a huge success this year! Over 150 students across grade levels attended and danced the night away. This event takes place annually and is planned and run by the High School Dance Committee with Dr. Faith Hansen as the teacher lead.



Updated High School Phone Expectations: As most of you know, we have really tightened up our routines and procedures related to phone use this year in the high school. Recently, our team identified that phones are a major distraction for our students. In an effort to support student learning, and a cohesive and supportive school setting, all students are asked daily to deposit their phones in designated area in each classroom. As humans we tend to struggle with change, but our team is confident that this small procedure will have a very positive impact on engagement. That said, if you need to reach your child during the school day, please contact our front office and we can get any message to them. Thank you for your support!

Sage Winter Clothing Drive: BRRRRRR !!! It's cold out there !!! Sage French Club is running a winter coat drive the next two weeks so we can help keep our community members from the Boise Rescue Mission warm. Please donate any extra (or new!) coats, scarves, and gloves. Simply drop your donation items in the bins located in the Summit lobby. Our events last from Monday Jan 26th through Wednesday Feb 2nd. Look for our reminders that will be posted in the halls! Merci Beaucoup !

ENRICHMENT OPPORTUNITIES

Skyhawks Basketball begins on February 25th for all students in Grades 3-5 after school here at Sage!

[Link to sign up online](#)

Also Coming Soon:

Skyhawks Pickleball- 2nd-4th grade-Thursdays- 4/30-5/21

Skyhawks Pickleball- 5th-7th grade-Wednesdays- 4/29-5/20



**Sage International
Boise** *Skyhawks*



BASKETBALL

Grades 3-5 | 4:00 - 4:50 PM
Wednesdays | 2/25 - 4/22

[Summer Camp Invention Registration is open!](#)

Grades K-6 here at Sage

July 6 - 10, 2026 from 9:00 am - 3:30 pm

Discounts given for early registration!

Enrichment continued...

Expeditions

We've had a great time this month going up to our local non-profit mountain with nearly 100 students from both Sage campuses to enjoy the Bogus Basin Lifesports program! These lucky students got to spend 2 to 3 Fridays learning and building their ski and snowboarding skills! This is an opportunity that is offered every year for both campuses, and we look forward to offering these again next winter!



We have some great opportunities coming up for both campuses to enjoy the little snow we have! Check out our catalog linked here to see everything we have coming up and to find the sign-up links for open lotteries!

We have spots available on our [Salmon River White Water Kayaking Clinic](#) for this June! This is a beginner course perfect for enthusiastic first-time kayakers set on the gorgeous Salmon River and supported by the professionals at Salmon River Adventure Company. Email Megan Furios to inquire about signing your student up for one of these last remaining spots!

PTO

Next Sage PTO Meeting is January 13th in the Sage Cafeteria at 5:30 PM - all are welcome!

We are excited about our **PYP Winter Luau** coming up on February 26th, 2026! This fun-filled event is for K-5 students and their families. We need the help of middle school and high school students, as well as parents of older students, to make it a success. Please [sign up](#) to volunteer or donate to the Junk Food Walk, and help us create an unforgettable experience for our students. We are gratefully accepting raffle item donations as well!



First Friday Playdate in February will be on February 6th at Chuck E. Cheese. Join the Sage community at Chuck E. Cheese starting at 3PM for some games, pizza and laughs. Get 10 free play points, and 20% of all sales will be donated to Raise the Shade!

Upcoming Dates:

2/6: Chuck E Chesse Playdate 3:00 pm

2/10: PTO meeting @ 5:30

2/26: K-5 Luau 5:30-7:30pm @ Sage

You can find all PTO information on [our website](#). Follow us on [Facebook](#), [Instagram](#) and email us at information@sagepto.org