



SAGE INTERNATIONAL SCHOOL BOISE NEWSLETTER

JANUARY 10, 2025

- ✔ **Report cards:** Thursday was the last day of Semester 1! Teachers are working on final grades over the next week and report cards will be available to families in [Skyward](#) by January 24th.
- ✔ **Lottery:** Our 2025 Lottery application is open and posted on our website! As Sage families, you **do NOT need to enter currently enrolled students or their siblings in the lottery**. Please see the note on page 7 from our Registrar for more information. If you know families who are interested in joining Sage, they can learn more and apply [HERE](#).
- ✔ **Yearbook orders:** There are two different yearbooks and two different websites where you can order online based on grade level.
 - **Grade K-5** yearbooks are \$18 and can be ordered at www.barksdalephoto.com using the access code: 0109005YB.
 - **Grade 6-12** yearbooks are \$35 and can be ordered at <https://web.treering.com/validate> using passcode 1017105249641604.
- ✔ **Our Supplies closet** gets low this time of year on things like tissue, cleaning wipes, and hand sanitizer. If you would like to contribute, you can drop items off at any front desk purchase items from our [Amazon Wishlist](#) and have them delivered directly to the school. Thank you!
- ✔ **School closure alerts:** Winter is here, and in the event of a school closure we will let parents know by 6:30 AM in the following ways: Email, Social Media, KTVB, and by text IF you opt-in. To opt in to text alerts please text "Y" via your cell phone to 61569. If you're unsure if you've done this, please do it again!

Check out our
[WEBSITE](#) and find us
on social media via
the links below!



MARK YOUR CALENDAR

January 14: PTO meeting 5:30 in cafeteria

January 20: MLKJ Day - No School

January 27 - February 9: Re-enrollment period

February 17 - 21: Winter Break - No School

February 25: PYP Class Photos & Spring Individual

The [2025-26 Academic Calendar](#) is available!

FROM EXECUTIVE DIRECTOR, ANDY JOHNSON



This month, as we honor the life and legacy of Dr. Martin Luther King Jr., I'd like to reflect on the profound impact his work continues to have on our world and how it aligns with the core values and mission that guide our learning community. As a reminder, Sage's mission is to, *"engage students within an inclusive international learning community, challenging all members to take risks and contribute locally and globally through open-minded inquiry."*

Dr. King consistently demonstrated courage in the face of overwhelming resistance, embodying the Principled learner who is also a Risk Taker (courageous). He challenged the deeply ingrained injustices of racial segregation with unwavering conviction, tirelessly seeking truth and justice through peaceful means. His profound belief in the inherent dignity and worth of every human being was complemented by his deep understanding of the interconnectedness of all people, a cornerstone of the Caring and Knowledgeable Learner.

Dr. King's dream of a society where individuals are *"not judged by the color of their skin but by the content of their character"* remains relevant and central to our work at school. His dream continues to serve as a reminder of the importance of fostering an Open-minded and Communicative learning environment where diverse perspectives are valued and heard.

I read Percival Everett's novel, *James*, over the holiday break. I thought it was one of the best books that I have read in a very long time. It offers a reflection on race, identity, and the enduring legacy of slavery and the Civil Rights Movement that Dr. King helped to lead that really resonated with me. Through the experiences of the novel's main character, James, the novel explores themes of justice, personal responsibility, personal agency, individual dignity and the ongoing struggle for equality. For me, James serves as a reminder of the importance of critical thinking, empathy, and a commitment to creating a more just world.

As an IB World School, we strive to partner with our parents to cultivate these same values in our students in line with our school's mission. We encourage them to become Risk-takers who are not afraid to take action in their local and global communities, Balanced people who understand the importance of personal and social well-being, and Reflective learners who continuously strive for personal and intellectual growth.

Dr. King's life and work continue to serve as an enduring inspiration. I encourage each member of this community to honor Dr. King's legacy by embracing the values of courage, compassion, and justice in all that we do. Let us strive to (continue to) create a learning environment where our words and actions ensure every student feels valued, respected, and empowered to make a positive difference in the world.

'CROSS CAMPUS COLABORATION

In December a small group of Viviana Aguilera's 10th-grade advisory students (who volunteered to join) decided to spread a little holiday cheer to the younger grades. They visited one kindergarten class and two second-grade classes, where they sang the bilingual song *Feliz Navidad* and shared a short story. It was a simple yet joyful way to bring smiles and festive spirit to our school community!



Third graders once again collaborated with the 9/10 Design students. Here is what teacher Colin Falconer had to say about the recent project: "As a capstone that completed our

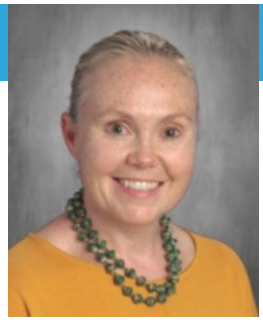


Monster Designers unit and combined service learning with public speaking, 9th and 10th-grade Design students recently presented their final storybook products to groups of third-grade students. The stories each contained a moral lesson and a main monster character that represented social issues and identified reasons why individuals can become isolated or liberated from their communities. Thank you to all the 3rd-grade students and teachers who actively listened and asked great questions about the stories!" A huge thank you to the third-grade team, and to Mr. Falconer for their beautiful cross campus collaboration.

8th-grade students share Art/Lang & Lit project with PYP

Interdisciplinary Units allow students and teachers to combine two or more separate disciplines and skill sets to create an integrated and complex product and build connected and holistic conceptual understandings. In "Oaxacan Papier Mache Sculpture (Alebrijes) and Narratives", 8th-grade students were introduced to a common statement of inquiry and both disciplinary and interdisciplinary in Language & Literature and Visual Art classes. Mrs. Gatfield led students to develop their narrative writing skills with a focus on creating an origin story for a wild creature they would create in Art classes. Mrs. Trevino facilitated students to inquire about the Mexican folk art form of Alebrijes, which combines the physical traits of multiple animals or mythical creatures embellished with bright colors and intricate patterns (think of the movie *Coco*). Once stories and sculptures were completed, our 8th graders shared them both with our PYP students (Kindergarteners, 1st and 2nd graders) this week. Learning and fun were had by all!





IB Spotlight – Kate Hunter and Nora Strauch

IB Reauthorization

As a K-12 school, we are in the midst of the reauthorization process with the International Baccalaureate Programme. This process is an opportunity for self-reflection and collaborative action, bound in the goal of improving our offerings for students. As our staff is fully engaged in this work, we want to share a few examples of what this looks like specifically in our K-5 community (and to what end). In addition to the collaborative projects above, we are updating our *POI*.

The *Programme of Inquiry* (POI) is the framework for all learning in the PYP. Collectively, our teachers are fine-tuning their thematic units (within and across grade levels) to ensure that they are relevant, engaging, coherent, and fully aligned to critical learning standards. A couple of examples of new units we are developing as a result of our school-wide Programme of Inquiry review:

- Grade 3 inquiry into forces and motion, where the students are inquiring into the ways forces, tools, and machines impact our world.
- Grade 1 social and scientific exploration of the different ways both animal and human homes reflect their environment.

The work of revising our Programme of Inquiry is exciting and invigorating. This work ensures that our framework for learning is an effective long-term plan that incorporates inquiry, international-mindedness, and opportunities for students to take action on their learning.

MIDDLE SCHOOL WITH ZACH PARKER



Winter MAP Testing

Our second round of MAP testing is occurring. We assess through this process three times per year and use the data to help make informed decisions about our planning and instructional practices. To support our learners, we test only in the morning to eliminate any afternoontiredness that might impact students' ability to focus. Students are well-versed in this process and do a wonderful job taking the assessments in stride.

Winter Formal Dance - The annual middle school winter Formal Dance will be held the evening of Thursday, January 23rd here at Sage. Students will be getting more information soon. This is probably my favorite student event as it's wonderful to see all our students dress up.

Sources of Strength - In January and February, we are focusing on the strength of Physical Health. Dinner table discussion ideas: How do you keep your bodies physically healthy? Do you eat well and exercise often? Do you sleep enough? Do you visit the doctor's office when you are sick?

Middle School continued....

Supporting our Students

If you have been a reader of this newsletter or followed some of my weekly update emails and videos you will be familiar with me sharing [resources](#) and talking about the importance of limiting our youth's exposure to cell phones and social media. Mrs. Moss, one of our Physical Health Education (PHE) teachers, is currently collaborating with two parents who center part of their work around mental health for our students. It is important as a team to help students recognize the potential impact that continually being connected to one's cell phone can have while conversely, the positive impact of disconnecting. To that end, and to better equip our team with more knowledge on the subject, the middle school staff will be working internally on a book study focused on *The Anxious Generation*.

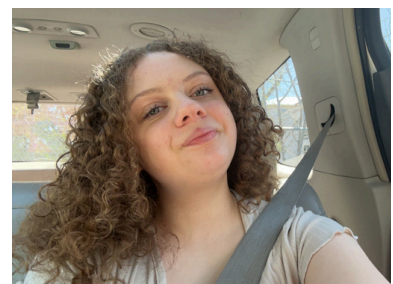
HIGH SCHOOL

Hello Sage Families,

Happy New Year! I have two IB Awards to announce in this publication as I was unable to get our November awards into the December Newsletter. Our **November** IB Attribute focus was **Communicator**. As *Communicators*, we express ourselves confidently and creatively in more than one language and in many ways. We collaborate effectively, listening carefully to the perspectives of other individuals and groups.



I am excited to announce that 11th Grade CP student Isabela Henderson was nominated for this award! Her Art teacher, Karelia Dubkowski shared the following, "Isabella is a great communicator in class asking questions and offering perspectives. She goes out of her way to communicate with her peers and bring them into the conversation, making them feel valued. It's great to see a student that advocates for herself and others. I appreciate how she engages in learning and adds her perspective to the classroom and making it a dynamic environment by fostering curiosity and creativity." Way to go, Bela! We are so grateful that you are at Sage.



In MYP, 10th grader Gus Heuttieg was nominated for being a Communicator. If you know Gus, you know that he is a quiet, thoughtful type. In Mrs. Travis' Language and Literature class Gus has really impressed her. She stated, "Over the last year and a half, Gus has learned to use his voice to make thoughtful comments, ask questions, discuss with his peers, and advocate for himself. I'm so proud of how he's grown in confidence, trusting that his voice as an amazing tool he can use." Gus, keep it up! We love hearing from you!

High School continued....

While I would argue that all Sage teachers are great communicators in their own ways, there is one who really sticks out to me for all of her dedicated work communicating with colleagues, her students, and their families! Mrs. Viviana Aguilera is our bilingual Integrated Science teacher from Columbia. Prior to coming to the US, Mrs. V worked as a Veterinarian in her home country. This is her 4th year at Sage and I am always impressed by her persistence to effectively communicate with her students and colleagues and reach out to parents both to celebrate and support her students. She is truly one of a kind!



For the month of December, we recognized the IB Attribute of **Caring**. As caring individuals we show empathy, compassion, and respect. We have a commitment to service, and we act to make a positive difference in the lives of others and in the world around us.

For those of us who work in public service, being caring just comes with the territory. But one staff member comes to mind that makes every single day better here at Sage. Administrative Assistant and Sage parent, Jolynn Somero, is such a caring and thoughtful person. Before she worked for us officially, she spent most of her time on campus volunteering and subbing for classrooms and our front desk. Teacher Colin Falconer shared the following, "JoLynn single-handedly makes Sage a more compassionate and respectful place with her caring presence. She never fails to treat everyone, teachers and students alike, with sincere kindness. In these dark and cold months, she brings light and warmth to everyone's lives!" Jo, we are so lucky to have you!



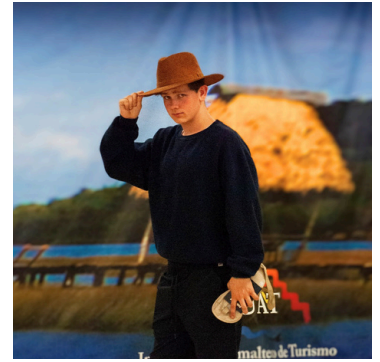
We have two students to recognize as well for their being extremely caring. MYP student Charlotte Bolin was nominated by two teachers. Charlotte is a dedicated student who fills her time outside of school with additional hobbies and extracurriculars, along with quality time with family and friends. Mr. Lunt shared the following: *Charlotte consistently represents what it means to be an IB high school student and the IB trait of Caring. Charlotte is always a positive influence to her peers, willing to be of assistance to her classmates, enjoys working collaboratively with her learning community, is creative in class, and puts forth great effort as a student and member of the Sage community. Charlotte always makes a point to say thank you at the end of each class and tells her teachers to have a good weekend. As a teacher, it's great to hear from a student that they're appreciative of the work we are putting forth. Charlotte shows great care for her friends, peers, teachers and the greater Sage community. Sage is a better place for having a student like Charlotte as part of their student body.*



Charlotte's math teacher, Mrs. Alley, added: *Charlotte is a kind and thoughtful young lady. She is respectful, a hard worker, and always willing to help others. She has a younger sister here at Sage whom she looks after and makes sure she gets to class etc. Charlotte is a very caring person both in her work ethic, asking questions and engaging in class, as well as helping others both in class and out of class and helping and caring for others outside of the classroom. Charlotte epitomizes what it is to be a caring person. Charlotte, thank you for taking such great care of us!*

High School continued....

Finally, our DP caring student is Cooper Molinengo. Cooper has his hands in just about everything here at Sage. You will often find him quick with a joke, or a witty remark. He keeps us all laughing and eye rolling with his charisma but Melissa Webster has really noticed just how thoughtful and gracious he is. She said, "Cooper is a community builder who generously shares his time, talent, and treasure to celebrate his peers and make experiences that bring students together." Cooper, we hope you never change, and if you win the presidency some day, don't forget about us!



Semester 1 officially ended on Thursday, January 9th. Teachers will use the following week to get their grades posted and final grades will be available in Skyward Family Access on or before January 24th, 2025. In addition to the grades posted in Skyward, MYP families will receive a Semester Progress Report which breaks down how each student was scored on the separate IB MYP Criterion. This only applies to students in grades 6-10.

Winter Formal is Thursday, January 23rd! The Dance Committee is excited to welcome all high school students from both our Boise and Middleton Sage schools to our annual winter formal! As in previous years, the event will take place at the Lounge at the End of the Universe. This is a semi-formal/formal event for 9-12th graders and it is such a blast! The theme is *A Night Under the Stars* and the event will start at 8:00 and last until 10:30 pm. Tickets are required and will be sold during our lunch break beginning Monday, January 13th until the date of the dance. Students are welcome to invite guests from other schools if they pick up and return a permission form from Dr. Hansen or Jolynn at the front desk. You can reach out to Brandy Burkett with any questions.

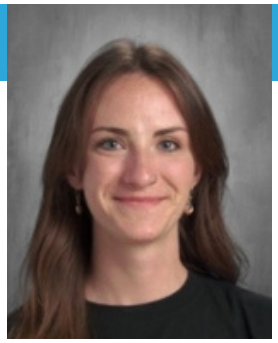
REGISTRAR KATIE ASHBY

Our 2025-26 Lottery Application is now open! If you know anyone interested in enrolling next year, they can apply [HERE](#). Applications are due by March 3rd at 9:00am, and we will hold our lottery draw on March 6th. We also have information sessions coming up that we encourage all prospective new families to attend. Dates and RSVP can be found [HERE](#).



Please know that **currently enrolled Sage students do not need to apply for the lottery.** However, we do require them to be re-enrolled for the 2025-2026 School Year which is facilitated through Skyward Family Access. The re-enrollment period for your Sage student will be from Monday, January 27, 2025 through Sunday, February 09, 2025. You will receive links via email for re-enrollment and it is required for all Sage students. Students who have not re-enrolled by the deadline will NOT have a spot secured for the 2025-26 school year and we will offer spots to lottery applicants. With re-enrollment, you will also be **given an opportunity to register siblings** who are not already enrolled at Sage for the Sibling Enrollment lottery. Current students and/or their siblings do not need to apply for the general lottery. Thank you!

SAGE EXPEDITIONS



We are so excited to be back from break and to get rolling on 2025 expeditions! We have a lot to look forward to in the upcoming semester. Please see the following list of planned expeditions and mark your calendar for the lottery openings, which will be sent via email.

January

1/10, 1/24, 1/31- Grades 3-11 Ski and Snowboard lessons @ Bogus Basin ~ Lottery closed

February

2/7- Grades 5 & 6- Snowshoe and snow science adventure ~ Lottery opens 1/21

March

3/7- Grades 6,7,8- Nordic Ski lessons @ Bogus Basin ~ Lottery opens 2/13

3/14-3/16- Grades 9,10,11,12- Backcountry Cabin & snow science ~ Lottery opens 2/24

Summer Opportunity

We will be taking a group of 14 high school students to the Salmon River this summer! Email Megan Furois at megan.furois@sagintl.org to enter your student onto our waitlist for this opportunity!

We are so happy to be able to offer snowshoeing and hike-in camping opportunities this winter thanks to the [Be Outside Idaho](#) initiative. Sage Expeditions was awarded a grant from BOI this fall and with this funding, we were able to purchase snowshoes for our program! This makes outdoor adventure so much more accessible for our students on both the Boise and Middleton campuses this winter and we are SO appreciative.

PTO

Next Meeting is Tuesday, January 14th at 5:30 in the Big Cafeteria and we would love for you to join us!

Next Event will be the **K-5 Luau** planned for **Thursday, February 27th!**

We are in need of several volunteers to make it happen, you can [sign up here](#). We need volunteers to gather raffle prizes, donate desserts for the cake walk, sell tickets, help run the games and concession booth, etc. This is one of our most beloved PTO events and is SUCH a great time for PYP students and families!



You can find all PTO information on [our website](#). Follow us on [Facebook](#) and [Instagram](#). Email us at information@sagepot.org!