



SAGE INTERNATIONAL SCHOOL BOISE NEWSLETTER

DECEMBER 21, 2023



Traffic Safety: Thank you for having patience and being extra cautious in our parking lot! Please always follow our established process, found [here](#). When people do otherwise, it can slow things down, create a hazard or result in an injury or accident. Be on the lookout for an email with further updates!



As temperatures drop, PLEASE send your student with clothing warm enough to spend time outside! We also ask that you label it with their name so that we can return found items to them. Our Lost & Found is building up again...please come take a look for any items that belong to you!



School closure alerts: Winter is here, and in the (uncommon) event of a school closure due to snow we will let parents know in the following ways by 6:30 AM: Email, Social Media, KTVB and if you opt-in, by text. To opt in to text alerts please text "Y" via your cell phone to 61569.

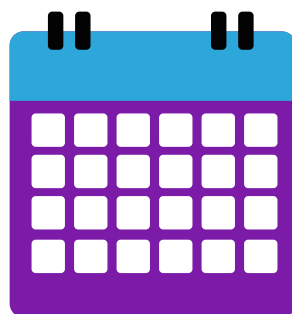


Lottery Season is coming! Our lottery opens January 2nd and we have several Information sessions coming up for families interested in joining Sage. The next session is January 17th at 5:30 pm and we'd love your help spreading the word. We also still have current openings for Kindergarten and 6th grade for THIS school year! They can find more information and RSVP on [our website](#). Please note, **current families DO NOT need to enter the lottery**, even if you have a sibling you'd like to enroll. We will send out re-enrollment information along with sibling lottery information later in January.



The Academic Calendar for the 2024-25 school year has been approved by the board and is posted on our [website here](#).

Check out our
[WEBSITE](#) and find us
on social media via
the links below!



MARK YOUR CALENDAR

December 25 - January 5: Holiday Break - No School!

January 11: End of First Semester

January 15: MLKJ Day - No School!

January 29: Re-enrollment opens

February 19-23: Winter Break - No School!

FROM EXECUTIVE DIRECTOR, ANDY JOHNSON



Dear families and staff of Sage International Schools,

Thank you for a brilliant first half of the school year. We have vibrant and supportive parent communities; engaged and curious students and caring and dedicated faculty and staff. We have strong schools because of all of you. Thank you.

Today (Thursday, December 21st) is the winter solstice - the shortest day of the year, the official beginning of winter and the moment in time when each day grows longer and brighter until the summer solstice.

Resilience | rə'zilyəns | - *the quality of being capable of bouncing back after difficulties. Sometimes it is simply called "toughness."* One of the things I most appreciate and admire about the International Baccalaureate's approach to learning and teaching is its insistence on providing opportunities to develop the whole person. We ask our children to be mathematicians, writers, scientists, readers, designers, aware of the importance of health and physical activity and involved in the betterment of their communities - both locally and globally. It is rare that one person is good at all of these things right away. Most people can be and it takes time. It takes a willingness to risk "failure" while learning. Resilience is critical to learning broadly and deeply.

In order to do these things well, children need to develop resilience through regular supported practice. We don't always get it right the first time and developing resilience skills helps each of us muster the courage to try again.

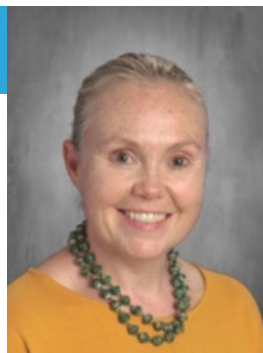
Resilience is one of the qualities good IB schools, like Sage schools, tries to foster in their students and staff. The [International Baccalaureate's framework](#) for building skills like resilience is called Approaches to Learning. Beginning in Kindergarten and continuing through 12th Grade our schools offer structured and unstructured opportunities to develop resilience and a host of other soft learning skills. We often combine opportunities to develop learning skills (like resilience) with values/mindsets/qualities embodied in the IB's [Learner Profile](#).

I believe that Sage schools provide a safe space to take risks with learning - to try new things, experiment with a way of communicating our understanding, to collaborate with someone who thinks differently than we do or to make sense of a task that feels a little vague. It is in these spaces of discomfort that we learn to stretch our learning, develop resilience and to have courage when approaching a new challenge.

I hope that each day brings a little more light into your life. I hope that each of you enjoys your family and friends over the break. I wish you all the best for 2024 and I know that it will bring challenges and joy just like 2023 did. Accepting new challenges and looking forward to new opportunities to learn can build each of our individual reserves of resiliency which directly contributes to a stronger school community.

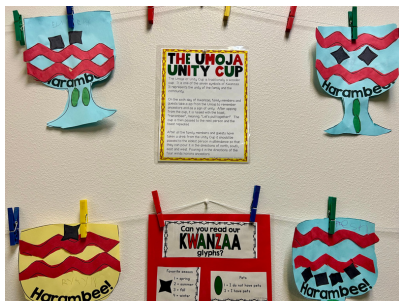
All the best for 2024,

Andy Johnson



Classroom Spotlight: Kindergarten and Winter Celebrations

Kindergarteners and their incredible teachers have been hard at work learning about our world's various celebrations this time of year. While they have created fun (and adorable!) winter crafts, they have also used this opportunity to delve deep into reading, math, and critical thinking skills.



By way of one example, pictured here you will see a Kwanzaa craft, wherein students learned about glyphs and other ways we use symbols and symbolic representation in our daily lives. We are so proud of our youngest learners and the incredible process they have made in this first semester of their school lives!

Expeditions/Experiential Learning and the PYP

One of the foundations of an IB education and life at Sage is empowering all community members to take an active role in their own learning and the life of their community. We also know that learning is inherently experiential, and we love the flexibility that our charter provides to integrate experiential learning in and out of the classroom. It has been exciting to bring [Sage Expeditions](#) back to life on the Boise campus. While a variety of opportunities exist on Fridays and during school breaks, we are also actively working to incorporate these adventures into our school day and our academic curriculum.

Moving into the winter and spring seasons of 2024, we are pleased to share that we will offer two expedition-based field experiences – both science related – during the school day. These expeditions are provided at no cost to families:

- Sage 4th Graders will participate in [SnowSchool](#) at Bogus Basin in early March. SnowSchool offers onsite learning in snow science and local ecology.
- Sage 5th Graders will participate in [Foothills Field Inquiry](#) at the Foothills Learning Center in early April. Offered by Boise Environmental Education in partnership with the City of Boise, this expedition will allow students to put the scientific method into action.

Families can expect further details on these field trips in January and February.

As both an educator and a parent, I am thrilled to be able to offer these opportunities to students, and we will continue to increase offerings across grade levels as we move forward.

PYP French Update

In grades 3-5 we've been working on a school theme for the past several weeks, describing our class schedules and expressing our opinions about our classes and our teachers. Here is a link to the slide deck for [Ma vie à l'école!](#) We are aiming for a skill level of "Novice Mid" according to the ACTFL Proficiency Scale. Proficiency is not just about what we know, but what we can do with what we know in spontaneous situations. You can read more [HERE!](#)

MIDDLE SCHOOL WITH ZACH PARKER



The end of the first semester wraps up one week after we return from Winter Break. It will take another week to get grades entered and shared with students and families, and you should find report cards posted in Skyward by January 26th.

In an effort to continue helping everyone grow into and best utilize our new student/teacher platform, [Toddle](#), I will be working through the system to see which families are not yet connected. If you happen to be one I will be reaching out to you.

I often like to share resources from Screenagers. This time around I'm offering up their recommendation of 7 [Documentaries Families Can Enjoy over the Break](#).

I'd like to send a special thank you out to our Sage Community and their support of our Annual Giving Tree. This year we collected just over \$3000 to distribute to Sage Families with food insecurity. This is a special community!!!

Wherever you go, whatever you practice, whatever you believe I wish you and your family a safe, healthy and joyous Holiday Break. As my grandfather loved to tell me as the last days of December came upon us, "I'll see you next year".

Reality Town Volunteers Needed

We are in need of 65+ volunteers on Thursday, January 18th from 12:30 to 3:30 PM. Our 8th grade students are participating in a "Reality Town" activity. Reality Town is a simulation that teaches students to manage their finances while also recognizing education as a means to more financial stability. Students will be assigned a job and family situation. Volunteers are needed to run a total of 22 tables. Students will visit each of the tables where they will make "purchases" such as housing, groceries, transportation, etc. No prior knowledge or experience is required. If you are interested, please complete the [form linked here](#).

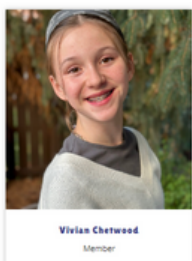
Congratulations to NaNoWriMo winners

8th graders Abbie Mortensen and Zelda Hickenbottom completed the NaNoWriMo challenge to write a 50,000-word novel in one month! They wrote 1,667 words per day, and can now receive published copies of their books! The dedication, commitment and perseverance is impressive in these two young ladies.



CAVU Climate Innovation Challenge

For the last two years, Sage MYP Design students have taken part in something called the ["Climate Innovation Challenge"](#) led by the New Mexico nonprofit CAVU. It is designed to help students from around the world develop and amplify youth-led climate change solutions. We have had several Sage students submit projects and win awards, including Vivian Chetwood!



This year, 7th grader Vivian applied to be on CAVU's first youth advisory board for this competition. She was one of only 6 students selected from around the world and is also the only middle schooler! Vivian meets with staff at CAVU and the other youth leadership board members virtually every month to help guide the direction of this international climate change program. Way to go Vivian, we're so proud!

HIGH SCHOOL WITH BRANDY BURKETT



Hello Sage Community!

Semester One Ends January 11th, 2024. Families can expect to see grades posted in Skyward the week of January 22nd. It has been a lovely holiday season and I am excited to share a few of the highlights with you. Each school year we participate in many traditions and last week we got our juniors and seniors together for the annual CP/DP skate night! We had a great turnout down at the Boise Centre.



Senior News: An email went out last week to all senior families with details related to graduation. I will continue to reach out on the subject next semester as we get closer to the big day. For now, I want to take the opportunity to shout out some of our seniors who have been accepted into schools and programs of their choice. If you do not see your senior here, please encourage them to reach out to me via email because I would love to feature them in future newsletters!

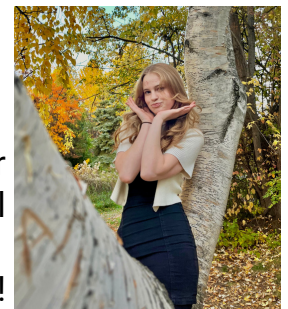


Congratulations to Olivia Burrue for her acceptance into Olivet Nazarene University. This private university is located just outside of Chicago and Olivia earned a full-ride leadership scholarship and will be attending this fall. Go, Olivia!

Congratulations to Mahayla Stephenson for her acceptance into the University of Idaho. She plans to major in Forensic Science and minor in Criminology. We are thrilled for you, Mahayla!



Congratulations to Zie Florendo for being accepted into Asbury University in Kentucky. They will be majoring in Media Communications with an emphasis in Film Production. We can't wait to see what you create, Zie!



Congratulations to Miranda (Mandie) Lorang for her admission to Concordia University Irvine! She will focus her studies on music and art. We are very proud of you, Mandie!



Congratulations to Quinn Carter for his acceptance into Reed College in Portland, Oregon! Quinn received a full ride scholarship and we could not be more excited for him!

High School continued....



American Red Cross Blood Drive: It's that time of the year again -- Sage is giving blood! Our high school blood drive is coming up in January, and it's time to get in the know! After reviewing the info below, if you plan to donate in January, Sign up [here](#)!

Who? Sage high schoolers older than 16 - students younger than 18 need to have a permission slip filled out and returned before the day of the drive. Permission slips can be found at the front desk with Cassie and in Dr. Hansen's room.

When? Wednesday, January 10th from 8:30 AM - 1:30 PM. We have 37 slots available, so it's first come first served!

Where? The Petit Cafe in Everest

Why? Every two seconds, someone in the United States needs blood. The Red Cross is responsible for 40% of blood donations collected in the US, and contributing to this cause can make a real impact.

How? Schedule an appointment with the Red Cross [HERE](#)! Wait, what's the difference between a Power Red and a normal blood donation? On the signup page, there are two different options for the type of donations you can make, and Power Red donations have a lot more restrictions. Check out [this resource](#) from the Red Cross that has more details.



THANK YOU to all the generous families that have supported Sage this year in a variety of ways! The partnerships we have with our families allow for a more successful learning community for our students. Whether you've donated your precious time, money, supplies, or and/or gifts...YOU help make Sage possible!

Thank you to the families that have purchased items from our [Amazon Wishlist](#). Mid-year (about now!) is when our community supplies start to dwindle. Replenishing these with donations is a huge help to our school and our budget! You can also deliver items to any front desk.

Thank you to the caring families that donated prizes for our holiday staff party, delivered food and treats for our staff this week, sent kind notes to our teachers, and more. We feel the love!

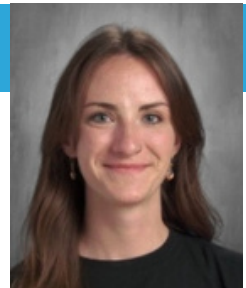
Last but not least, thank you to the families who have donated to our Annual Fund "[Mind the Gap](#)." Check out [this video](#) from Emily Downey with more information about what Mind the Gap is. We have had 86 families donate so far, and our goal is to have ALL donate in whatever amount they wish. As a Public Charter school that offers an outstanding IB education FREE to our students, we need the support of our community.

continued on next page...

We receive funding from the state, but zero local tax dollars like District Schools do. We own our school buildings and pay to maintain them ourselves. Luckily, our generous community sees the great value in the education we provide your students and comes through each year to help us Mind the Gap in funding. **WE NEED YOUR HELP!** Proving that our families support and partner with us helps us gain vital funding from others.

You can make a one-time donation, or give monthly or quarterly. A huge thank you to the 86 donors who have helped us raise almost \$40,000 so far! With over 1,000 students and more than 500 families, we have a long way to go. In this season of giving, we are asking EVERY Sage Family to make a donation in any amount to help us reach our goal of \$125,000. We hope to reach our **HALFWAY GOAL of \$62,500 by the end of the year**....which gives us 10 days to raise \$23,000! We know that with your help, we can do it. Please [visit our giving website](#) to learn more about how you can help!

SAGE EXPEDITIONS WITH MEGAN FUROIS



At Sage, we work to create an inclusive learning environment where every student feels they belong and can learn effectively. Sage Expeditions is in full support of this mission by creating inclusive outdoor adventures for our students with a focus on learning and building a sense of belonging.

Outdoor education fosters physical, emotional, and intellectual growth in students. In a review from the International Journal of Environmental Research and Public Health, it's been stated that there are physical, cognitive, and emotional benefits for students partaking in outdoor education. Outdoor education fosters skills such as communication, reasoning, and builds resilience in students through positive risk-taking and conflict resolution. These all work together to build a student's sense of self and sense of belonging. We are so happy to offer outdoor learning opportunities to foster student growth in and outside of the classroom.

If you have not already, please take a moment to take this [short survey](#) to share with us, what you hope to see from Sage Expeditions in the future!

This December brings a short hiatus for Sage Expeditions but we will be back in the new year with many outdoor learning opportunities for both campuses!

In the meantime, there are many great activities that you and your families can enjoy outdoors on your own! Take a look at some of the ideas we have listed below!

Winter activities near and around the Treasure Valley

- [Free skiing opportunities for 5th and 6th graders](#)
- Hike to a hot spring ~ [Pine Flats](#) near Lowman is a great and easy hike for families!
- Discover the [MK Nature Center](#)
- [Ice Skating at Indian Creek Plaza](#)
- Snowshoeing near [Idaho City](#)
- More ideas from [Project Learning Tree](#)

ENRICHMENT OPPORTUNITIES

Afterschool Flag Football: (for students in 2nd-5th grade) begins the week of January 22nd! Offered by the great "Afterschool Athletics" program that offered basketball, students will gain fundamental flag football skills right here on the Sage playfield after school. Click the link above to learn more and register for your FREE introductory class!

Snow Team: It's not too late to sign up for the Sage International Middle School Snow Team and the Bogus Basin School Race Program! Through the Bogus Basin Ski Education Foundation, students of all skill levels have the opportunity to take part in Alpine, Nordic, and Snowboard competitions. This year's coaches are Austin Weeks and Mimi Trevino, [click here](#) to learn more!

Free Nordic Ski Clinic at Bogus Basin- December 28th at 2:00 PM. [Details here.](#)



1ST RACE REGISTRATION DEADLINE - BY 12/24/23

HELMET STICKER PACKET PICKUP, 1/4-6/24, TIMES VARY

TEAM INFO LUNCH - WEDNESDAY, 1/10/24, SAGE RM. 145

DEADLINE TO REGISTER FOR 2024 RACE SEASON - 1/31/24

SAGE PTO

Mark Your Calendar:

January 17, 5:30 pm:
PTO Meeting

February 8, 6:00 -8:00 pm:
K-5 Luau

PTO Neurodivergent group: We have some Sage families interested in creating a group for [neurodivergent](#) students and families. If you may be interested, please take a couple of minutes to complete [this survey](#). Your input is key to gauging interest and shaping the future activities and focus of our group.



[Click here to subscribe to the newsletter and find more details about the Sage PTO!](#)



facebook.com/sageintpto



@sageinternationalpto



information@sagepto.org